

# DISCLAIMER

Due to uncertainty surrounding the application of recent amendments to the Competition Act (Canada), the documents incorporated by reference herein are referenced for historical information purposes only and do not constitute active or current representations of Canadian Utilities Limited or any of its related parties. The purpose of these documents is to comply with disclosure requirements that were in effect on the date these documents were filed; Canadian Utilities undertakes no obligation to update such information except as required by applicable law. Canadian Utilities remains committed to taking steps to address climate change and continuing to engage in sustainability initiatives.



**CANADIAN UTILITIES LIMITED**

An **ATCO** Company



# Investor Presentation

Canadian Utilities Limited

December 6, 2024



# Agenda

<b>Legal Notice</b>	<b>3</b>
<b>Canadian Utilities Overview</b>	<b>5</b>
Organizational Structure	5
Financial Overview	6
Growth Drivers	8
Community Engagement	9
<b>ATCO Energy Systems</b>	<b>10</b>
Overview	11
Our Next Phase of Growth	21
Capital Investment	22
Yellowhead Mainline	23
<b>ATCO EnPower</b>	<b>25</b>
Overview	26
Natural Gas & NGL Storage	29
Generation	31
Cleaner Fuels	34
Partnership Environment	36
<b>ATCO Australia</b>	<b>38</b>
<b>Why Invest</b>	<b>42</b>
<b>Appendix</b>	<b>43</b>

## Legal Notice

### ***Forward-Looking Information Advisory***

Statements made by representatives of Canadian Utilities Limited (the "Company") and information provided in this presentation may be considered forward-looking information. Forward-looking information is often, but not always, identified by the use of words such as "anticipate", "plan", "estimate", "expect", "may", "will", "intend", "should", "goals", "targets", "strategy", "future", "potential" and similar expressions. Such information includes, but is not limited to, references to: strategic plans and partnerships; growth and expansion plans and opportunities; expectations regarding Canada's energy future in Alberta; expectations regarding the Yellow Mainline project, including the anticipated size, specifications and incremental natural gas capacity of the Yellowhead Mainline project, the anticipated total investment in the project, and expectations regarding the timing for front end engineering design (FEED) completion, regulatory and permitting applications and decisions, commencement of construction, and bringing the Yellowhead Mainline project on-stream; expectations regarding ATCO EnPower's Heartland Hydrogen Hub project, including ATCO's continuing commitment to the project, the timing for commencement of FEED, and continuing collaboration with governments and First Nations groups on the project; expectations regarding ATCO EnPower's Atlas Carbon Storage Hub project, including project capacity and timing for commercial operations of Phase I; expectations regarding ATCO EnPower's mid- and near-term development projects to 2030 and beyond, including the anticipated electricity generation capacity and/or natural gas or natural gas liquids storage capacity of each project, as applicable, associated capital development plans to 2030, and expected timelines to achieve each project; the expected timing for a decision on ATCO Australia's Genuine Offer bid for the South Australia Hydrogen Jobs Plan project; and the expected timing and impact of regulatory decisions and new regulatory announcements.

Such forward-looking information is considered to be reasonable based on the information that is available on the date of this presentation and the processes used to prepare such information; however, such information does not constitute a guarantee of future performance and no assurance can be given that the information will prove to be correct. Forward-looking information should not be unduly relied upon. Such information involves a variety of assumptions, known and unknown risks and uncertainties, and other factors, which may cause actual results, levels of activity, and achievements to differ materially from those anticipated by such forward-looking information. The forward-looking information reflects management's beliefs and assumptions with respect to, among other things: management's current plans and its perception of historical trends; current conditions and expected future developments; certain regulatory applications that will be made and are expected to be approved, including one related to the expansion of the natural gas transmission system in support of increasing natural gas demand in the Heartland Industrial region and those required in connection with the Yellowhead Mainline project; continuing collaboration with certain regulatory, environmental and First Nations groups; the performance of assets and equipment; demand levels for oil, natural gas, gasoline, diesel and other energy sources; certain levels of future energy use; future production rates; future revenue and earnings; the design specifications of development projects; the availability of labour, materials, services and infrastructure; the satisfaction by third parties of their obligations; a supportive regulatory environment; the ability to meet current project schedules and complete proposed development projects at currently estimated project budgets; the availability of financing sources on acceptable terms; in respect of the Heartland Hydrogen Project, a final investment decision; assumptions related to electricity prices based on forward strip prices and merchant price differentials that are consistent with management's observations; and other assumptions inherent in Management's expectations with respect to the forward-looking information identified herein.

Actual results could differ materially from those anticipated in the forward-looking information as a result of, among other things: risks inherent in the performance of assets; capital efficiencies and cost savings; applicable laws, regulations and government policies, including uncertainty with respect to recent amendments to the *Competition Act* (Canada); regulatory decisions and the regulatory environment; competitive factors in the industries in which the Company operates; prevailing economic conditions; credit risk; interest rate fluctuations; the availability and cost of labour, materials, services, and infrastructure; future demand for resources; the development and execution of projects, including development projects, not proceeding on schedule or at all, or at currently estimated budgets; the availability of financing sources for development projects on acceptable terms; prices of electricity, natural gas, natural gas liquids, and renewable energy; the development and performance of technology and new energy efficient products, services, and programs including but not limited to the use of zero-emission and renewable fuels, carbon capture, and storage, electrification of equipment powered by zero-emission energy sources and utilization and availability of carbon offsets; potential termination or breach of contract by contract counterparties; the occurrence of unexpected events such as fires, extreme weather conditions, explosions, blow-outs, equipment failures, transportation incidents, and other accidents or similar events; global pandemics; geopolitical tensions and wars; and other risk factors, many of which are beyond the control of the company. Due to the interdependencies and correlation of these factors, the impact of any one material assumption or risk on a forward-looking statement cannot be determined with certainty. Readers are cautioned that the foregoing lists are not exhaustive. For additional information about the principal risks faced by the Company, see "Business Risks and Risk Management" in the Company's Management's Discussion and Analysis for the year-ended December 31, 2023.

This presentation may contain information that constitutes future-oriented financial information or financial outlook information, all of which are subject to the same assumptions, risk factors, limitations and qualifications set forth above. Readers are cautioned that the assumptions used in the preparation of such information, although considered reasonable at the time of preparation, may prove to be imprecise or inaccurate and, as such, undue reliance should not be placed on such future-oriented financial information or financial outlook information. The Company's actual results, performance and achievements could differ materially from those expressed in, or implied by, such future-oriented financial information or financial outlook information. The Company has included such information in order to provide readers with a more complete perspective on its future operations and its current expectations relating to its future performance. Such information may not be appropriate for other purposes and readers are cautioned that such information should not be used for purposes other than those for which it has been disclosed herein. Future-oriented financial information or financial outlook information contained herein was made as of the date of this presentation. Any forward-looking information contained in this presentation represents the Company's expectations as of the date hereof, and is subject to change after such date. The Company disclaims any intention or obligation to update or revise any forward-looking information whether as a result of new information, future events or otherwise, except as required by applicable securities legislation.

## **Legal Notice**

### ***Non-GAAP and Other Financial Measures Disclosure Advisory***

This presentation contains various "total of segments measures" (as such term is defined in National Instrument 52-112 – *Non-GAAP and Other Financial Measures Disclosure* ("NI 52-112")), "non-GAAP financial measures" (as such term is defined in NI 52-112), and "non-GAAP ratios" (as such term is defined in NI 52-112).

NI 52-112 defines a "total of segments measure" as a financial measure disclosed by an issuer that is a subtotal or total of two or more reportable segments of an entity, is not a component of a line item disclosed in the primary financial statements of the entity, is disclosed in the notes to the financial statements of the entity, and is not disclosed in the primary financial statements of the entity. Consolidated adjusted earnings (loss) and adjusted earnings (loss) for each of ATCO Energy Systems, ATCO EnPower, ATCO Australia and CU Corporate & Other are total of segments measures, as defined in NI 52-112. Total of segments measures are most directly comparable to total earnings (loss) attributable to equity owners of the Company. A reconciliation of these total of segments measures with total earnings (loss) attributable to equity owners of the Company is presented in the Company's Management's Discussion and Analysis for the nine months ended September 30, 2024 (the "MD&A").

NI 52-112 defines a "non-GAAP financial measure" as a financial measure disclosed by an issuer that (a) depicts the historical or expected future financial performance, financial position or cash flow of an entity, (b) with respect to its composition, excludes an amount that is included in, or includes an amount that is excluded from, the composition of the most directly comparable financial measure disclosed in the primary financial statements of the entity, (c) is not disclosed in the financial statements of the entity, and (d) is not a ratio, fraction, percentage or similar representation. NI 52-112 defines a "non-GAAP ratio" as a financial measure disclosed by an issuer that (a) is in the form of a ratio, fraction, percentage or similar representation, (b) has a non-GAAP financial measure as one or more of its components, and (c) is not disclosed in the financial statements of the entity. References to capital investment, mid-year rate base for each of ATCO Energy Systems and ATCO Australia, adjusted EBITDA for ATCO EnPower, and adjusted earnings (loss) for each of ATCO Gas Australia and ATCO Power Australia are non-GAAP financial measures, as defined in NI 52-112. References to mid-year rate base CAGR are non-GAAP ratios, as defined in NI 52-112.

Capital investment is defined as cash used for capital expenditures, business combinations, and cash used in the Company's share of capital expenditures in joint ventures. Management views capital investment as the Company's total cash investment in assets. Capital expenditures include additions to property, plant and equipment and intangibles as well as interest capitalized during construction. The most directly comparable measure to capital investment reported in accordance with International Financial Reporting Standards ("IFRS") is capital expenditures. Capital investment is not a standardized financial measure under the reporting framework used to prepare our financial statements. Capital investment may not be comparable to similar financial measures disclosed by other issuers. For investors, capital investment is useful because it identifies how much cash is being used to acquire and invest in assets. A reconciliation of capital investments to capital expenditures is presented in the MD&A.

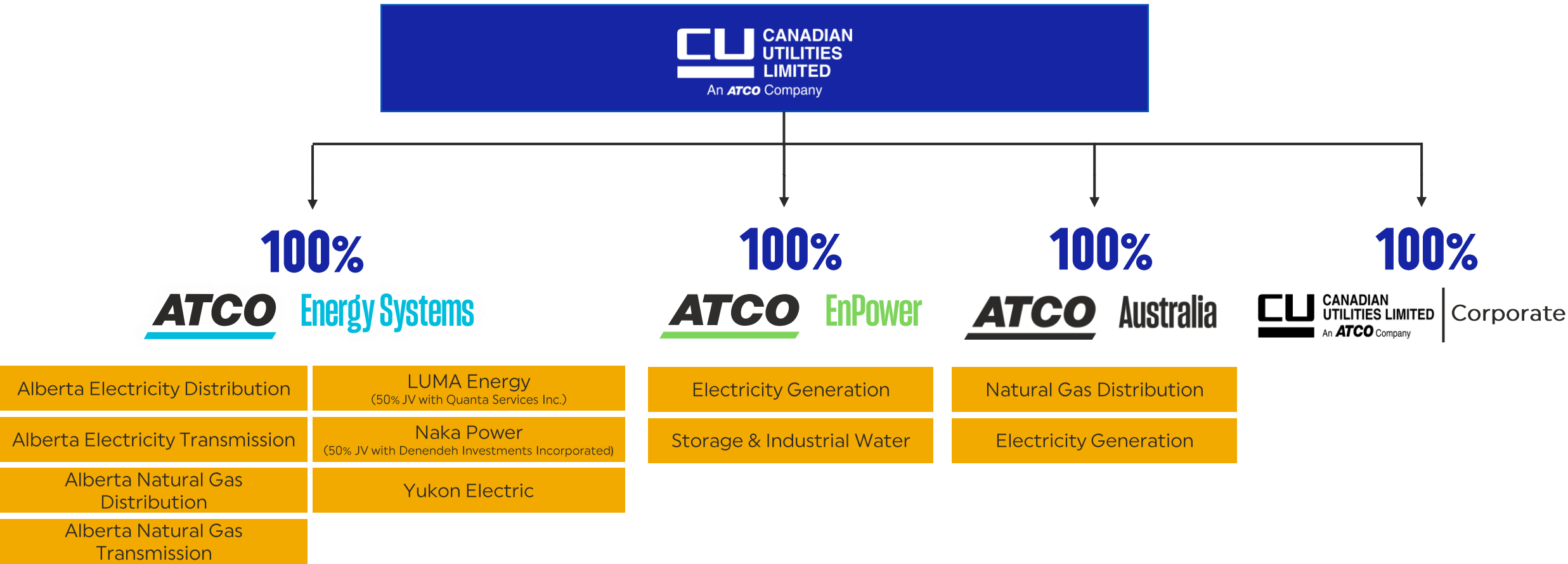
Mid-year rate base for a given year is calculated as the average of the opening rate base and the closing rate base. Growth in mid-year rate base is a leading indicator of a utility's earnings trend, depending on changes in the equity ratio of the mid-year rate base and the rate of return on common equity. Mid-year rate base is not a standardized financial measure under the reporting framework used to prepare the Company's financial statements and may not be comparable to similar financial measures disclosed by other issuers. Management views mid-year rate base as a key metric for determining the Company's profitability. Further information regarding mid-year rate base, including a reconciliation of mid-year rate base to property, plant and equipment and intangible assets, is presented in "Appendix 1: Supplemental Non-Audited Financial Information" to the MD&A and in "Appendix 1: Supplemental Non-Audited Financial Information" to the CU Inc. Management's Discussion and Analysis for the nine months ended September 30, 2024.

Adjusted EBITDA is an additional important metric for ATCO EnPower and is representative of core operational results. EBITDA is defined as earnings before interest, taxes, depreciation and amortization. Adjusted EBITDA is defined as EBITDA after adjustments, excluding one-time gains and losses, impairments, and items that are not in the normal course of business or a result of day-to-day operations. Adjusted EBITDA is most directly comparable to earnings (loss) attributable to equity owners but is not a standardized financial measure under the reporting framework used to prepare the Company's financial statements. Adjusted EBITDA may not be comparable to similar financial measures disclosed by other issuers. A reconciliation of adjusted EBITDA for ATCO EnPower to adjusted earnings is presented in "Appendix 1: Supplemental Non-Audited Financial Information" to the MD&A, and a reconciliation of adjusted earnings (loss) to earnings (loss) attributable to equity owners of the Company is provided under "Reconciliation of Adjusted Earnings to Earnings Attributable to Equity Owners of the Company" in the MD&A.

Adjusted earnings (loss) are earnings (loss) attributable to equity owners of the Company after adjusting for the timing of revenues and expenses associated with rate-regulated activities, dividends on equity preferred shares of the Company, and unrealized gains or losses on mark-to-market forward and swap commodity contracts. Adjusted earnings (loss) also exclude one-time gains and losses, impairments, and items that are not in the normal course of business or a result of day-to-day operations. Adjusted earnings (loss) are a key measure of segment earnings that management uses to assess segment performance and allocate resources and allow for a more effective analysis of operating performance and trends. It is management's view that adjusted earnings (loss) allow a better assessment of the economics of rate regulation in Canada and Australia than IFRS earnings. The most directly comparable measure reported in accordance with IFRS is earnings (loss) attributable to equity owners of the Company. Additional information regarding this measure, including a reconciliation of adjusted earnings (loss) to earnings (loss) attributable to equity owners of the Company, is provided in the MD&A under "Other Financial and Non-GAAP Measures" and "Reconciliation of Adjusted Earnings to Earnings Attributable to Equity Owners of the Company".

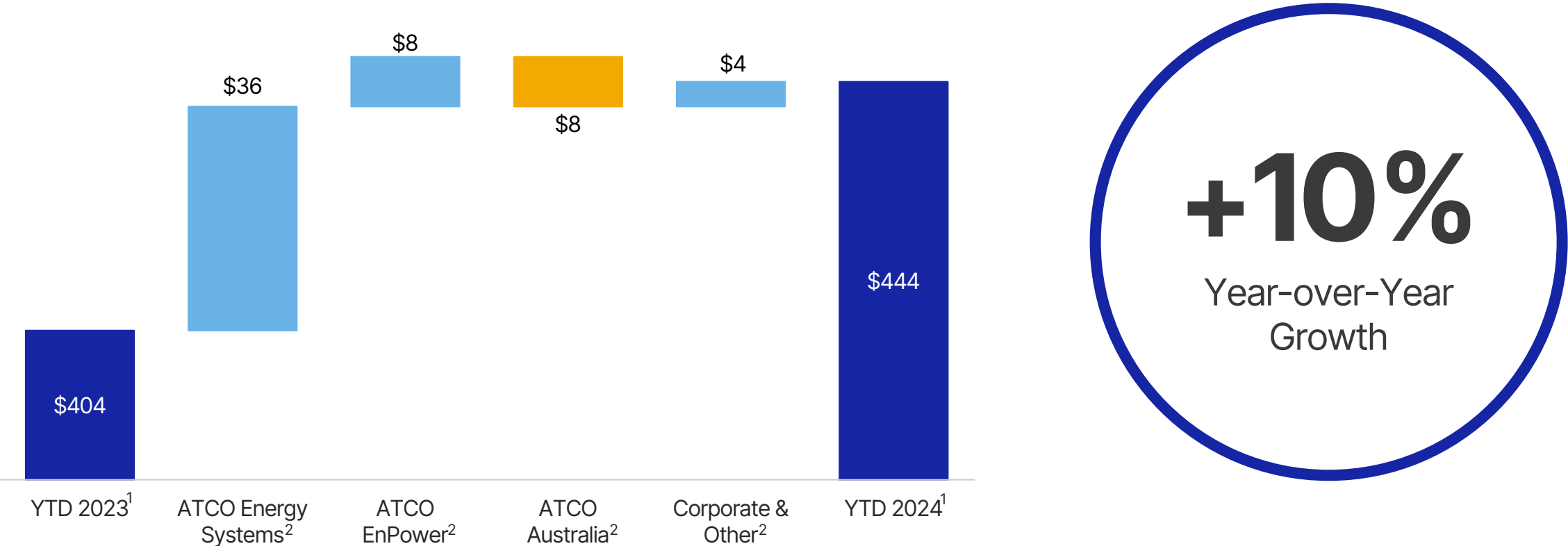
"Year-to-date" and "YTD" references in this presentation refer to the nine months ended September 30, 2024, or September 30, 2023, as the context requires. The MD&A is available on SEDAR+ at [www.sedarplus.ca](http://www.sedarplus.ca). The referenced sections of the MD&A are incorporated by reference herein.

# Organizational Structure



\*Canadian Utilities' Corporate & Other includes the global corporate head office in Calgary, Canada, and the Mexico corporate head office in Mexico City, Mexico. Corporate & Other also includes preferred share dividend and debt expenses.

# Year-to-Date 2024 Adjusted Earnings<sup>1</sup> Waterfall



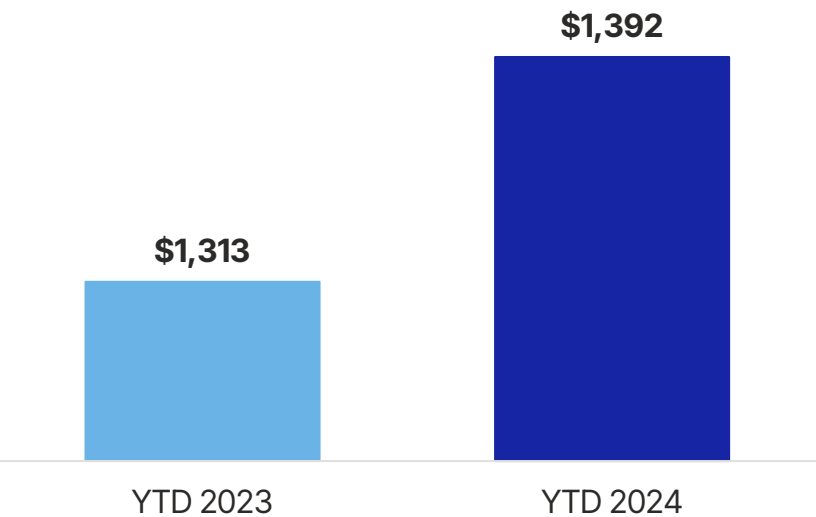
Note: Millions of Canadian dollars.

1. Total of segments measure (as defined in NI 52-112). The most directly comparable measure reported in accordance with IFRS is earnings (loss) attributable to equity owners of the Company, which was \$522 million for the nine months ended September 30, 2023, and \$316 million for the nine months ended September 30, 2024. See *Legal Notice – Non-GAAP and Other Financial Measures Disclosure Advisory* for additional information.

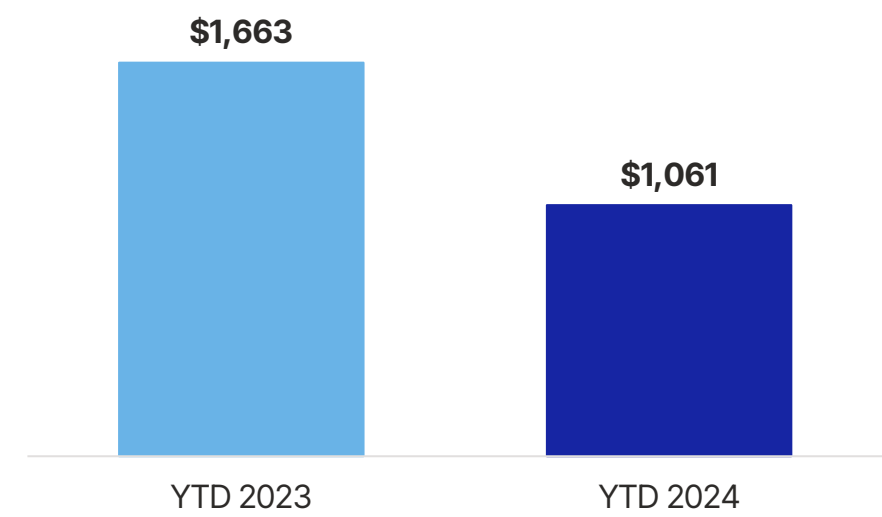
2. Represents the incremental addition in adjusted earnings (loss) from YTD 2023 to YTD 2024. Adjusted earnings (loss) for each of ATCO Energy Systems, ATCO EnPower, ATCO Australia and Corporate & Other are total Canadian Utilities Limited Investor Presentation of segments measures (as defined in NI 52-112). See *Legal Notice – Non-GAAP and Other Financial Measures Disclosure Advisory* for additional information.

# Strong Cash Flows Support Capital Program

Cash Flows from Operating Activities



Capital Investment<sup>1</sup>



**Portfolio of cash flow generating assets support our strategic investments that underpin long-term growth**

Note: Millions of Canadian dollars.

1. Non-GAAP financial measure (as defined in NI 52-112). The most directly comparable financial measure reported in accordance with IFRS is capital expenditures, which was \$966 million for the nine months ended September 30, 2023, and \$1,052 million for the nine months ended September 30, 2024. See *Legal Notice – Non-GAAP and Other Financial Measures Disclosure Advisory* for additional information.

# Canada's Energy Future Begins in Alberta

**#1** GDP Per Capita<sup>1</sup>

**#1** Population Growth<sup>2</sup>

**\$152B+** new investment in Major Projects in Alberta<sup>3</sup>

1. Government of Alberta, GDP per capita, 2023.

2. Statistics Canada.

3. Government of Alberta, Major Projects, November 2024.

# A Long History of Collaborating with Indigenous Communities

**36+ YEARS**

**1987: established relationship with Naka Power (formerly Denendeh Investments)**

**55 MOUs and Agreements completed with First Nations<sup>1</sup>**

**\$440M in economic benefits to First Nations since 2019**

**Strong relationships with Indigenous peoples positions ATCO as a trusted partner<sup>2</sup>**

294 Nunavut Ltd  
5296 Nunavut Ltd  
Aamjiwnaang First Nation  
Arctic Slope World Services  
Athabasca Chipewyan First Nation  
Beaubassin Mi'kmaq  
Canupawakpa  
Cheslatta  
Chiniki First Nation  
Clarence Campeau Dvlpt. Fund  
Daylu Dena First Nation  
Denendeh Investments Incorporated  
Det'on Cho

Ermineskin Cree Nation  
George Gordon First Nation  
Goodstoney First Nation  
Haisla First Nation  
Infinity Development Corp.  
Inuvialuit Development Corp.  
Inuvik Gas Ltd.  
Ikhil Joint Venture  
Kluane First Nation  
Ktunaxa Nation Council  
Kwikwetlem First Nation  
Lhoosk'uz Dene Nation  
Liard First Nation  
MacKay Range Development Corp.

Makivik Corp. Nunavik  
Maliseet Nation at Tobique  
Marten Falls  
Matachewan First Nation  
Metis Nation of Ontario  
Mikisew Cree First Nation  
Moose Cree Business Consortium  
NASCo NWTel  
Naskapi First Nation  
Pan Arctic Inuit Logistics  
Piikani Nation  
Qikiqtaaluk Corporation  
Saddle Lake First Nation  
Sagamok Anishnabek First Nation

Sahtu Dene Council  
Simpco First Nation  
Squamish Nation  
St'at'imc First Nation  
Torngait Services  
UQSUC Corp. Iqaluit Fuel Supply  
Vuntut Gwitchin Government  
Siksika Nation  
Mattagami First Nation  
Lyon Kechika Contracting Ltd  
Paqntk'ek Mikmaw Community  
George Gordon Development Limited  
Simpco Resources Limited  
M'hiigan Limited Partnership

1. As of December 31, 2023.

2. These relationships have been created over time, beginning in 1987.

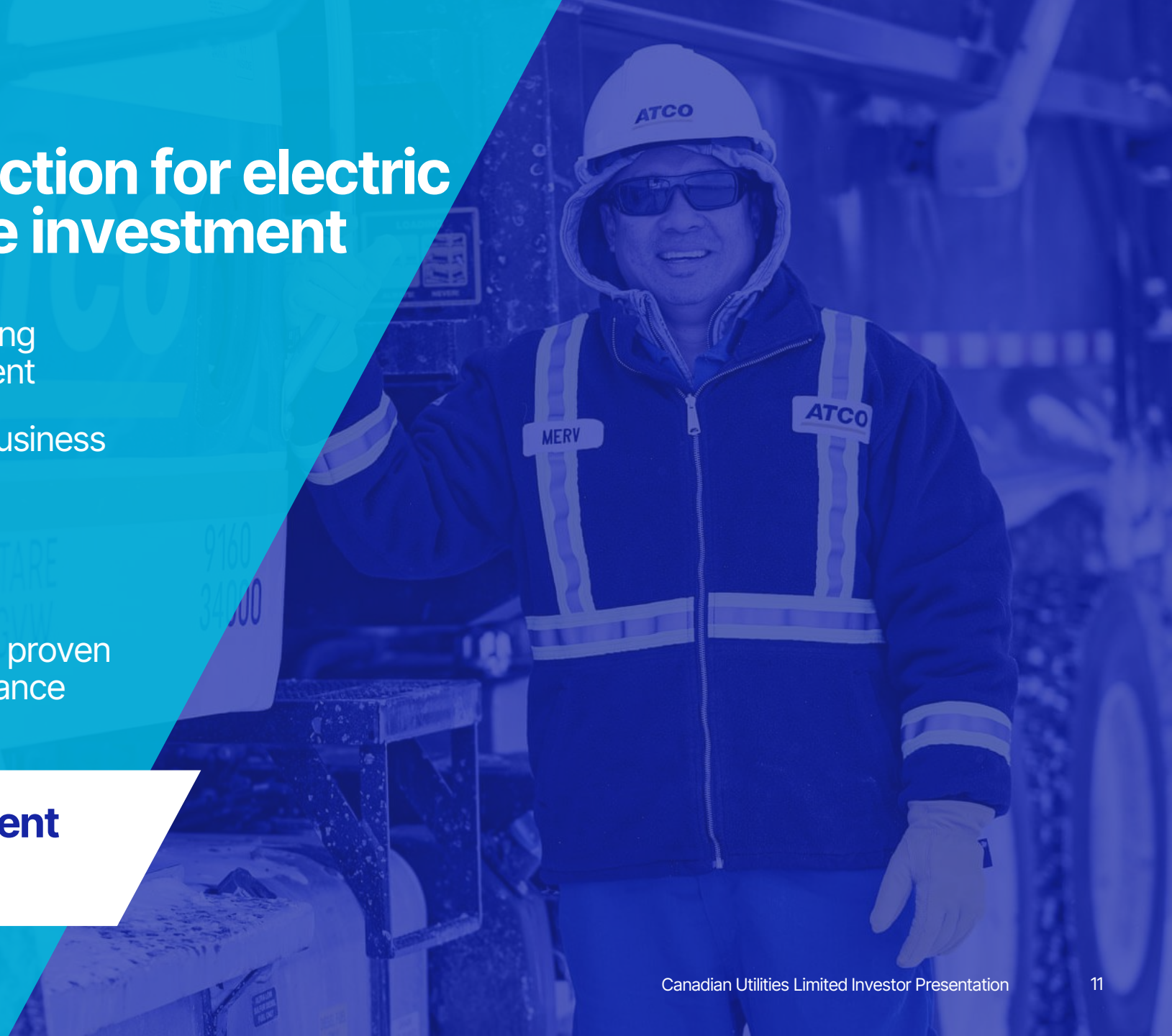


# **ATCO** Energy Systems™

# An exceptional jurisdiction for electric and gas infrastructure investment

- Strong macroeconomic factors, including energy transition support and investment
- Government has supportive and pro-business environment
- Highly gas supportive jurisdiction
- Supportive regulatory environment - prospective rates, effective permitting, proven ability to deliver consistent outperformance

**Alberta has one of best investment environments in North America**



# Pure-play, gas and electric regulated utility

**\$2.2B+**

2024 YTD Revenue<sup>1</sup>

**\$14B**

2023 Mid-Year Rate Base<sup>2</sup>

**\$427M**

2024 YTD  
Adjusted Earnings<sup>1,3</sup>

**3.5% - 4.3%**

Mid-Year  
Rate Base CAGR<sup>4</sup>  
(2023-26)

**7 Utilities**

ATCO Electric Transmission

ATCO Electric Distribution

ATCO Gas

ATCO Pipelines

ATCO Yukon Electrical

Naka Power (NWT)

LUMA Energy (Puerto Rico)

1. Nine months ended September 30, 2024.

2. Non-GAAP financial measure (as defined in NI 52-112). The most directly comparable measures reported in accordance with IFRS are property, plant and equipment and intangible assets, which for ATCO Energy Systems were \$17.0 billion and \$0.8 billion, respectively, for the year ended December 31, 2023. See *Legal Notice – Non-GAAP and Other Financial Measures Disclosure Advisory* for additional information.

3. Total of segments measure (as defined in NI 52-112). The most directly comparable measure reported in accordance with IFRS is earnings (loss) attributable to equity owners of the Company, which for ATCO Energy Systems, was \$361 million for the nine months ended September 30, 2024. See *Legal Notice – Non-GAAP and Other Financial Measures Disclosure Advisory* for additional information.

4. Non-GAAP ratio (as defined in NI 52-112). See *Legal Notice – Non-GAAP and Other Financial Measures Disclosure Advisory* for additional information.

# Unlocking the energy transition

**Electric T&D assets** + **Natural Gas T&D assets** ► **Optionality**

**Decarbonization**  
directly benefits our  
**unique electric and gas**  
asset base and network

Note: T&D stands for Transmission and Distribution.



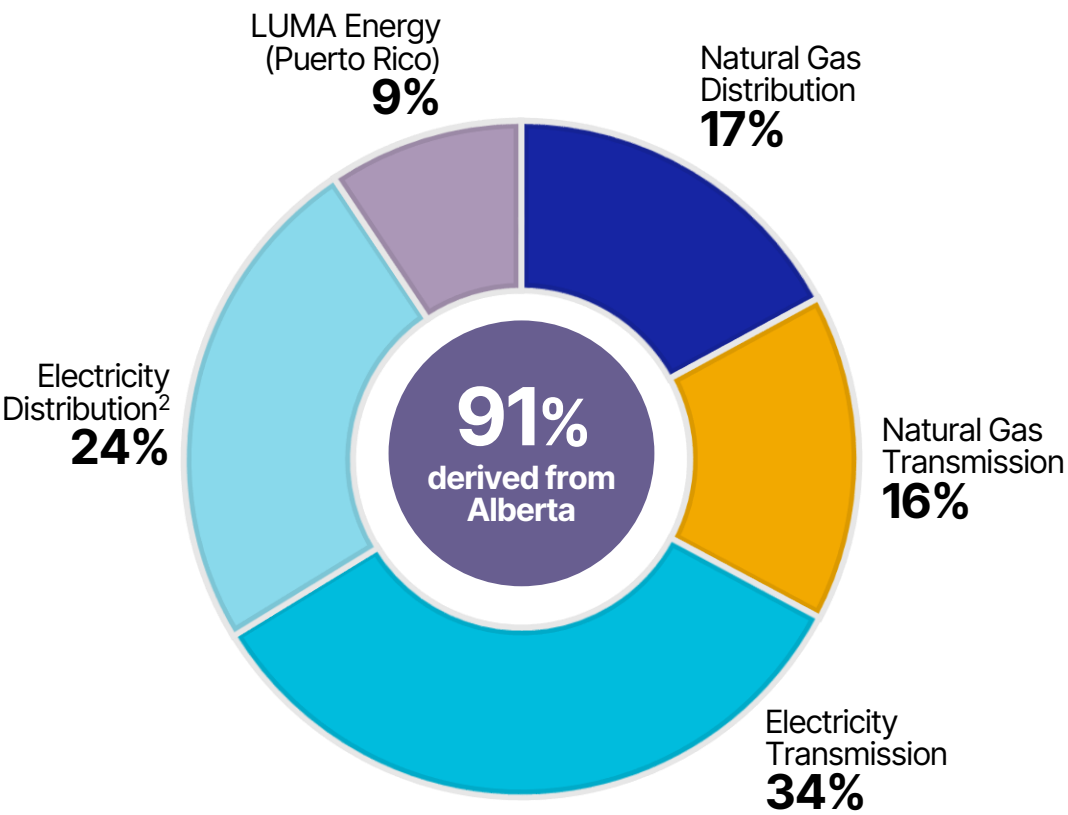
**Case study:**

## **Dow's net zero, polyethylene and ethylene derivatives plant**

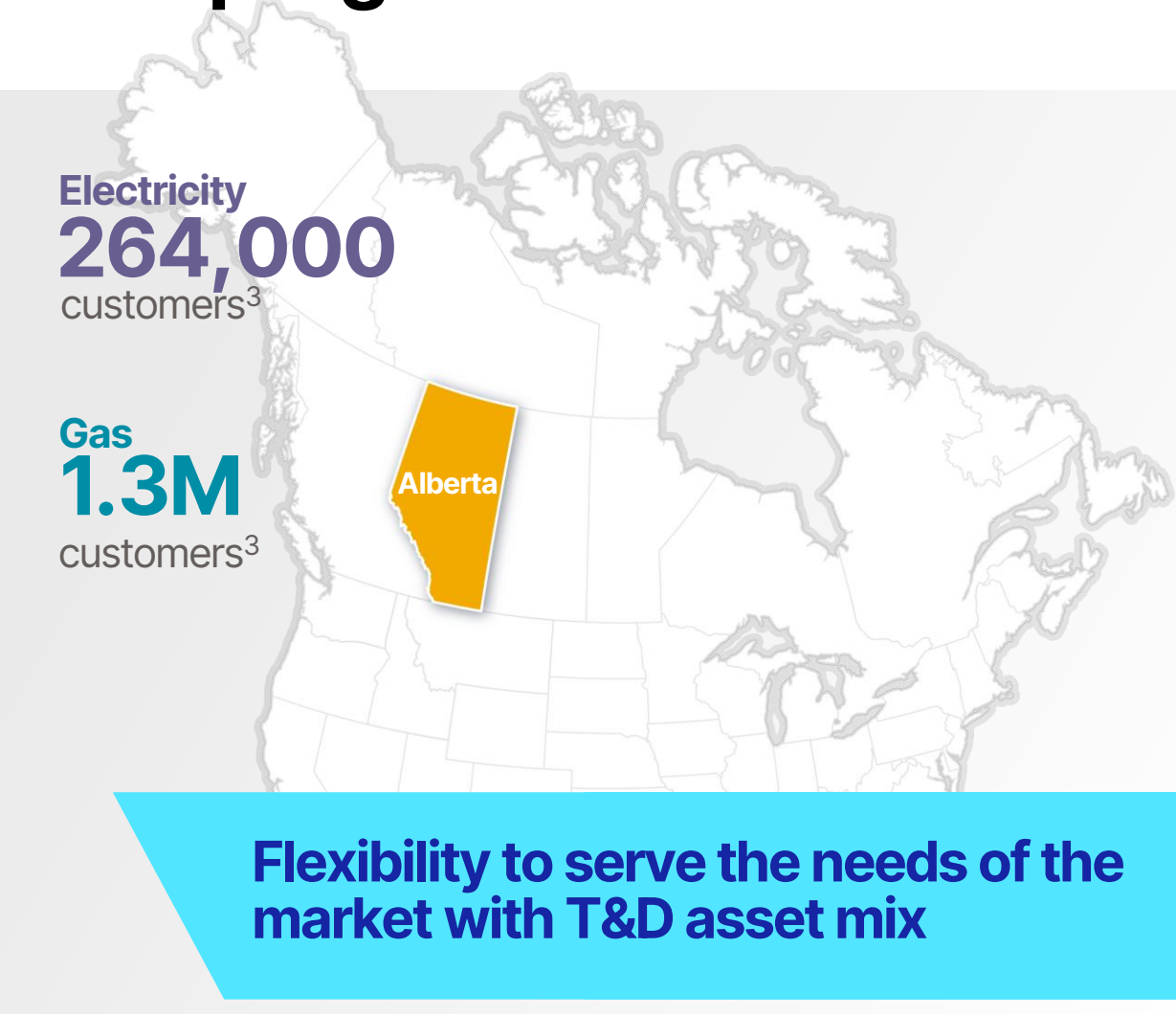
- Energy Systems supplying natural gas to the plant as feedstock for ethylene and polyethylene production
- Large industrial investments in Alberta moving toward cleaner energy projects

# Transmission and distribution underpin growth in Alberta

Adjusted Earnings Contribution by Operating Segment<sup>1</sup>



1. For the nine months ended September 30, 2024.  
2. Includes ATCO Yukon Electrical and Naka Power (NWT).  
3. Average monthly customers in 2023.  
Note: T&D stands for Transmission and Distribution.



# Alberta's economic growth is underpinned by natural gas

Alberta is a leading  
natural gas producer

**11 Bcf/d**

natural gas production in  
Alberta, representing  
61% of total Canadian  
production<sup>1</sup>

Essential for affordable &  
reliable residential heating

**9x**

ratio of gas to electric  
peak system load

1. Canada Energy Regulator, 2024.

2. Alberta Energy Regulator, June 2024.

3. A new net zero polyethylene and ethylene derivatives plant using natural gas.  
Government of Alberta, Major Projects, November 2024.

Industrial sector relies  
heavily on natural gas

**6.8 Bcf/d**

is the estimated demand for  
Alberta's natural gas, accounting  
for 60% of its marketable gas  
production<sup>2</sup>

**\$11.6B**

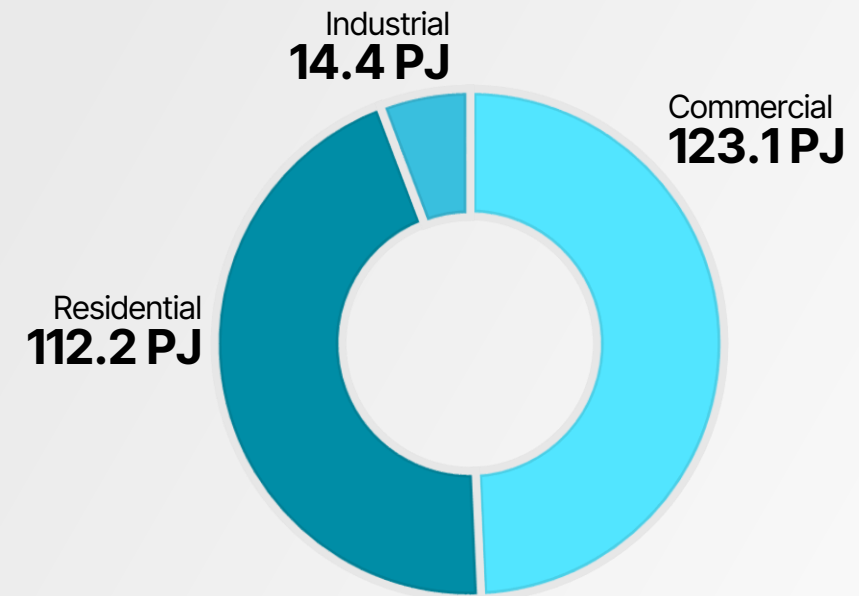
Dow's investment to  
construct a new net-zero  
plant in Alberta's Industrial  
Heartland<sup>3</sup>

# The largest gas distributor in Alberta

Energy Systems delivers natural gas to the electricity producers facing increased demand from growth and electrification



## Natural Gas Distribution Volume<sup>1,2,3</sup>



**41,700km**  
of pipeline


**Our natural gas assets play an essential role in Alberta's growth**

1. For the year ended December 31, 2023.  
2. Not shown is "Other" which makes up 0.3 PJ.  
3. 1 PJ is equal to approximately 0.95 Bcf.

# An owner, operator of critical electric infrastructure in Alberta and Canada's north

**11,000 km**  
transmission lines

**60,000 km**  
distribution lines

 Area served by electricity distribution and transmission



## Rate base investment opportunities

System resiliency, reliability and climate adaptation driven by weather events



## Stable base anchored by diverse industrials with long-lived assets driving growth

**Proven ability to effectively operate across a range of challenging natural environments**

# Operational excellence across our electrical and natural gas assets

	2023	2022
<b>System Average Interruption Frequency Index (SAIFI)<sup>1</sup></b>	1.60%	1.63%
<b>System Average Interruption Duration Index (SAIDI)<sup>1</sup></b>	5.99 hr	4.85 hr
<b>Lost-time injury rate<sup>2</sup></b>	0.00	0.09
<b>Recordable injury rate<sup>2</sup></b>	1.06	1.12

**Performing an essential role  
in Alberta's overall system reliability**

1. Alberta electricity distribution.  
2. Cases/200,000 hr worked.

## ELECTRICITY

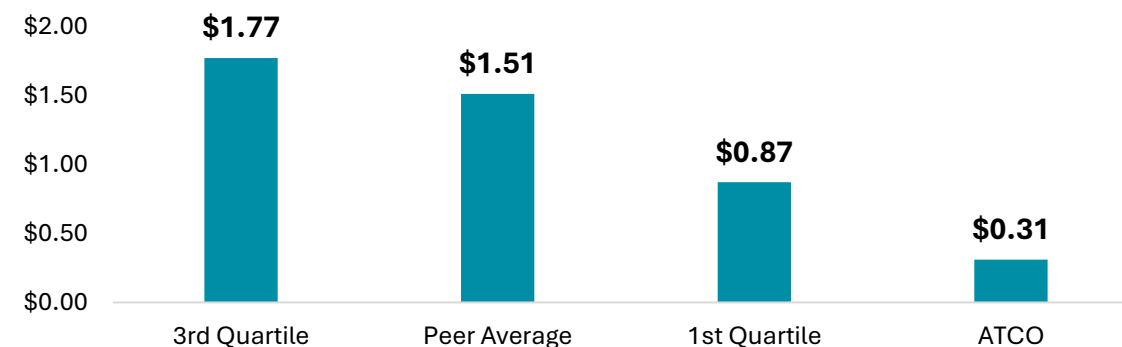
**94%** Customer Satisfaction

## GAS

**96%** Customer Satisfaction

### Total Operations & Maintenance Cost per GJ of Gas Transported

#### GAS



# LUMA: Deploying our operations expertise in Puerto Rico

**1.5M**      **50/50**

customers  
served in  
Puerto Rico

strong ongoing partnership  
with Quanta Services, a leading  
specialized contracting  
services company

**Awarded contract  
based on operational  
excellence**

**15-year contract to maintain, operate and  
modernize Puerto Rico's transmission &  
distribution system**

- Fixed fee for service paid monthly, indexed to inflation
- Additional incentive fees determined annually based on performance metrics
- Flow-through of system operating costs and capital expenditures paid from pre-funded services accounts

**Delivers material, low-risk earnings of a  
similar profile of our utility earnings**

# A team that consistently delivers infrastructure builds

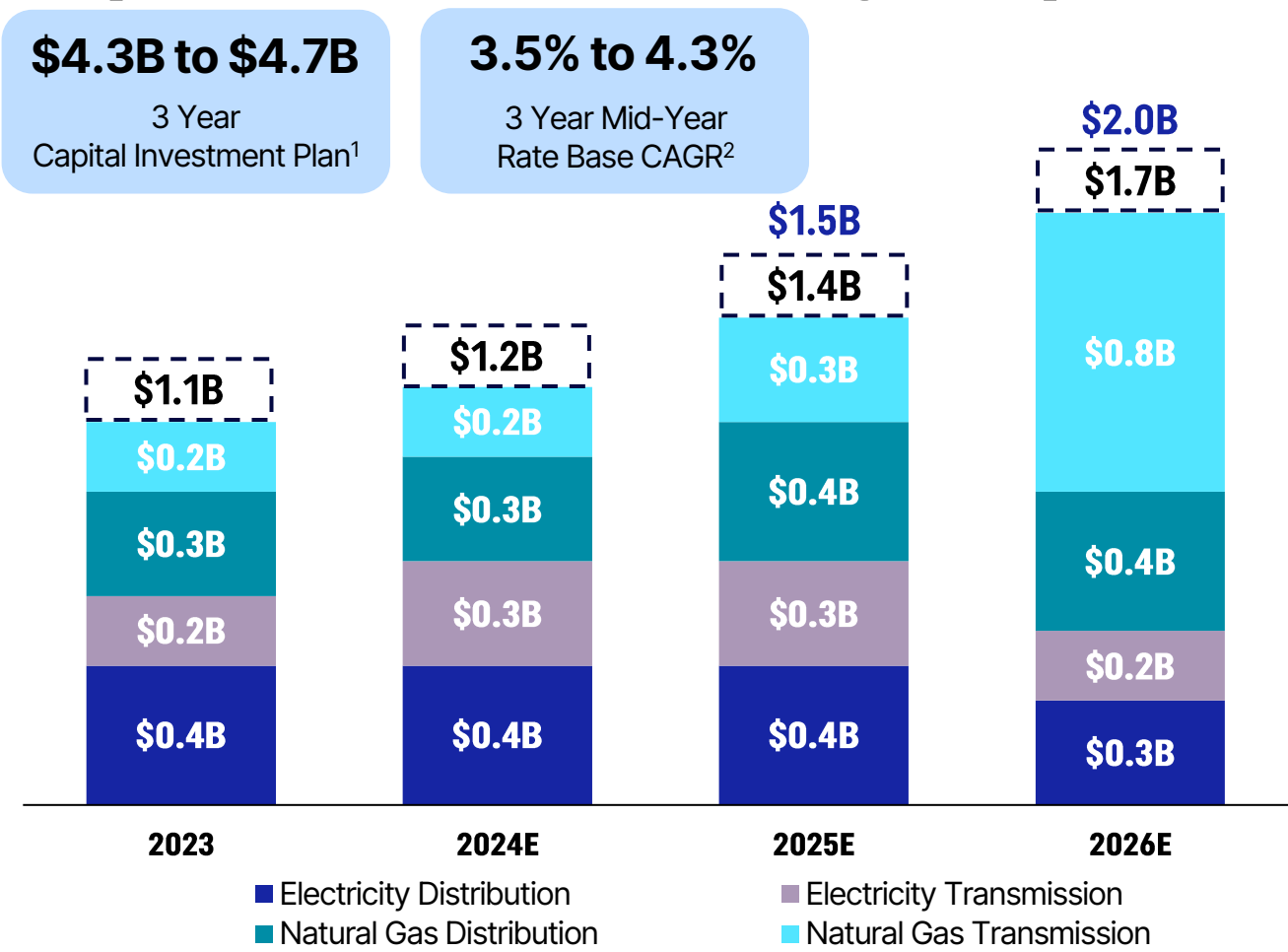
Project	Location	In-service date	Description
<b>Yellowhead Mainline</b>	Edson to Edmonton	Q4 2027 (Expected)	200-230km high-pressure natural gas pipeline and compression facilities
<b>Central East Transfer Out</b>	Red Deer, Lacombe & Stettler	Q2 2026 (Expected)	240kV transmission lines
<b>Urban Pipeline Replacement</b>	Calgary & Edmonton	2021	High pressure pipelines in dense jurisdiction
<b>Alberta Power Line</b>	Northcentral Alberta	2019	508km, 500kV AC transmission line
<b>Hanna Region Transmission</b>	Alberta's East Central region	2015	Transmission network upgrade for pipeline and renewable expansion
<b>Eastern Alberta Transmission Line</b>	Brooks to Gibbons	2015	485km, 500 kV HVDC transmission line
<b>EATL Converters</b>	Brooks, Gibbons	2015	Newell and Heathfield converter stations





# Our next phase of growth

# Capital Investment (3-year plan)



**We expect to get a 4% to 5% long-term rate-base growth target**

1. Capital investment is a non-GAAP financial measure (as defined in NI 52-112). The most directly comparable measure reported in accordance with IFRS is capital expenditures, which for ATCO Energy Systems was \$1,213 million for the year ended December 31, 2023 (\$1,130 million excluding International Natural Gas Distribution). ATCO Energy Systems had capital investments of \$1,219 million for the year ended December 31, 2023 (\$1,136 million excluding International Natural Gas Distribution). See *Legal Notice - Non-GAAP and Other Financial Measures Disclosure Advisory* for additional information.

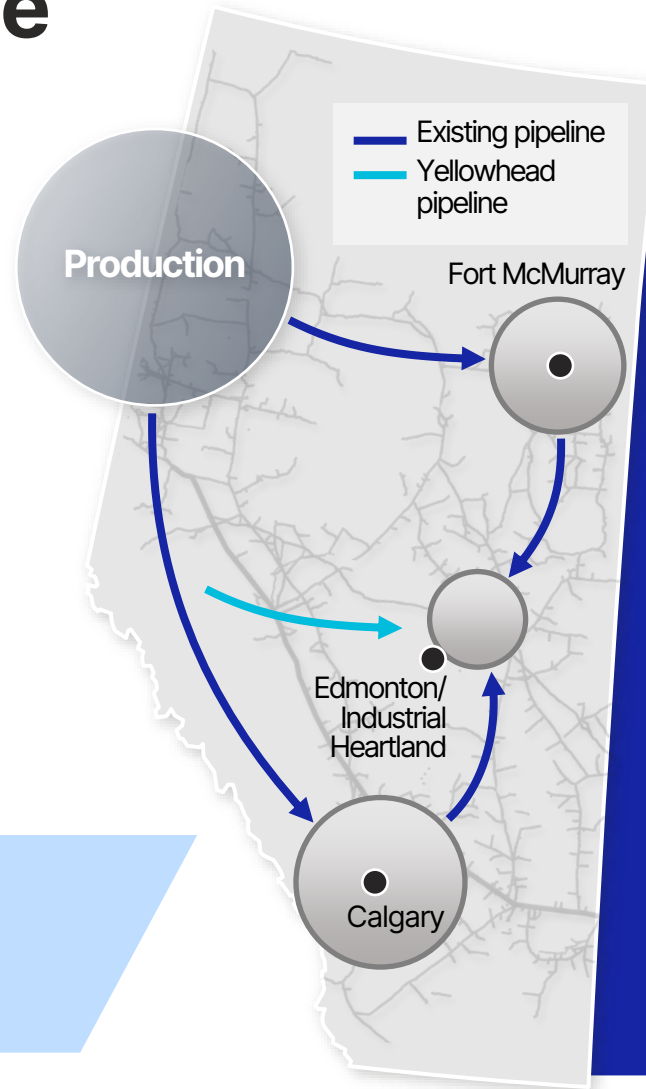
2. Mid-year rate base CAGR is a non-GAAP ratio (as defined in NI 52-112). See *Legal Notice - Non-GAAP and Other Financial Measures Disclosure Advisory* for additional information.

# Yellowhead Mainline

**200-230 km length**

**1.1 Bcf/d capacity**

**Unlocking capacity and  
increasing system resiliency**



- ➡ Needs application filed with AUC in September 2024
- ➡ Total investment for the project is estimated at \$2.8 billion
- ➡ Construction to start in 2026; expected to be on-stream in Q4 2027
- ➡ Yellowhead will release additional capacity on existing pipeline to meet demand in other regions

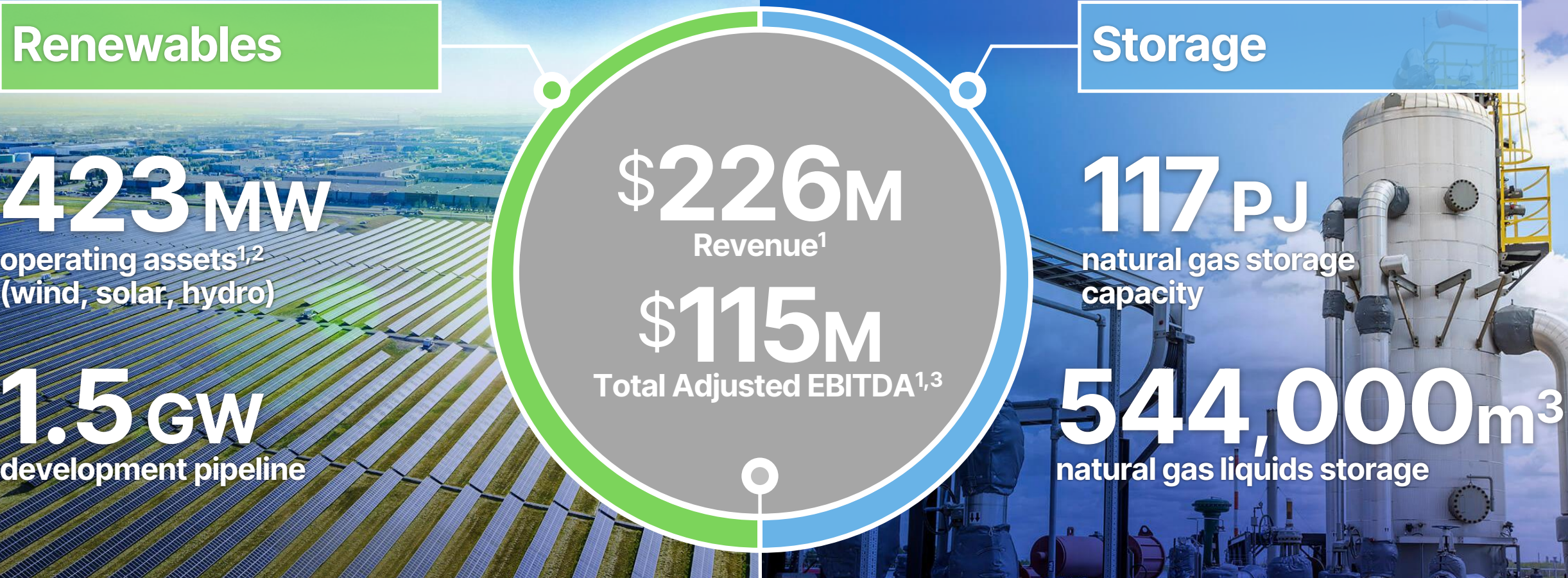
# Yellowhead Mainline Timeline



The image features a blue banner on the left with the ATCO EnPower logo. The background shows three people in safety gear standing in a field with wind turbines in the distance.

**ATCO** EnPower™

# A strong, stable base of unique operating assets



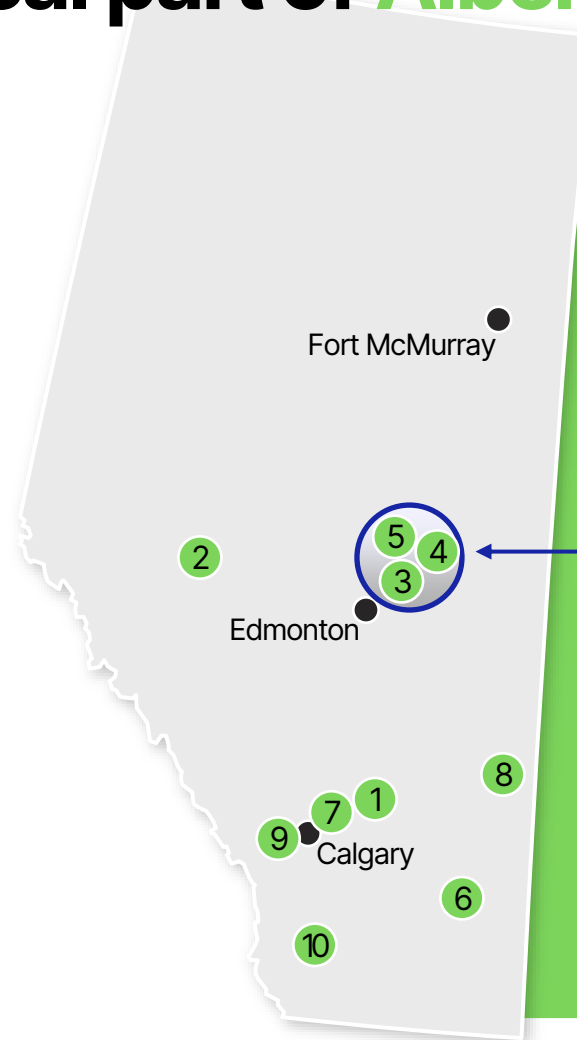
**Adjusted EBITDA Contribution by Operating Segment (\$ millions)<sup>1</sup>**

1. For the nine months ended September 30, 2024.  
2. Includes gross capacity of all operating assets.  
3. Non-GAAP financial measure (as defined in NI 52-112). The most directly comparable measure reported in accordance with IFRS is earnings attributable to equity owners of the Company, which for ATCO EnPower was \$42 million for the nine months ended September 30, 2024. See Legal Notice – Non-GAAP and Other Financial Measures Disclosure Advisory for additional information.

# Our footprint is a critical part of **Alberta's** energy future

## Assets

- 1 Carbon natural gas storage
- 2 Alberta Hub natural gas storage
- 3 ATCO Heartland energy centre (natural gas liquid storage)
- 4 ATCO Heartland industrial water system
- 5 Atlas carbon sequestration
- 6 Forty Mile wind phase 1
- 7 Deerfoot solar
- 8 Empress solar
- 9 Barlow solar
- 10 Oldman hydro



**2,000 acres owned  
in the Alberta  
Industrial Heartland  
Region, with access  
to pipelines,  
caverns, water  
treatment, and  
CCUS**

# We are Alberta's leader in three low carbon markets

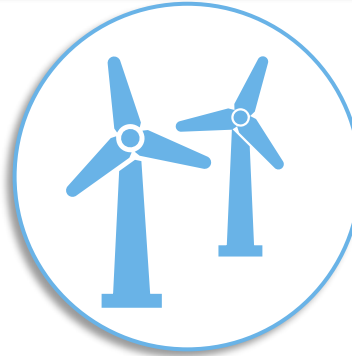
## MATURE



### Natural Gas & NGL Storage

- Natural gas and NGLs are key energy transition fuels in support of petrochemical and hydrogen decarbonization
- EnPower owns critical natural gas and NGL storage in one of the largest oil and gas production basins in North America
- Unlevered assets with history of consistent margins and growth generate reliable cash flow

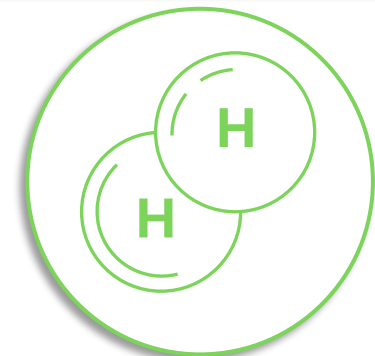
## ESTABLISHED AND GROWING



### Generation

- Alberta is home to world-class wind and solar resource
- Canada's largest de-regulated energy only market, allowing for bilateral PPAs for customers looking to decarbonize
- EnPower well positioned with a large multi-technology development pipeline

## EMERGING



### Cleaner Fuels

- Uniquely positioned for cleaner H<sub>2</sub> production and export with abundant natural resources and access to global markets
- Large domestic market with existing hydrogen demand in the industrial sector, and a home heating system reliant on natural gas to manage cold climates
- EnPower developing low-cost, clean hydrogen production in Alberta's Industrial Heartland



# Storage leaders in the Alberta market

**5**  
Existing  
salt caverns

**117 PJ**

Natural gas  
storage capacity

- 68 PJ at Carbon
- 49 PJ at Alberta Hub

**~20%**

Alberta gas storage  
market share

**544,000m<sup>3</sup>**

Natural gas liquids  
storage capacity

**High**

capacity under  
contract

- Multi-year contracts with high quality, diverse customer base provide predictability with upside potential from future spreads outlook
- Growing capacity and revenue with long-term repeatable customers

- 60/40 partnership with AltaGas Ltd
- Storage contracts of 10-25 years with 'world scale' petrochemical and midstream counterparties
- Fixed storage fees under long-term contracts

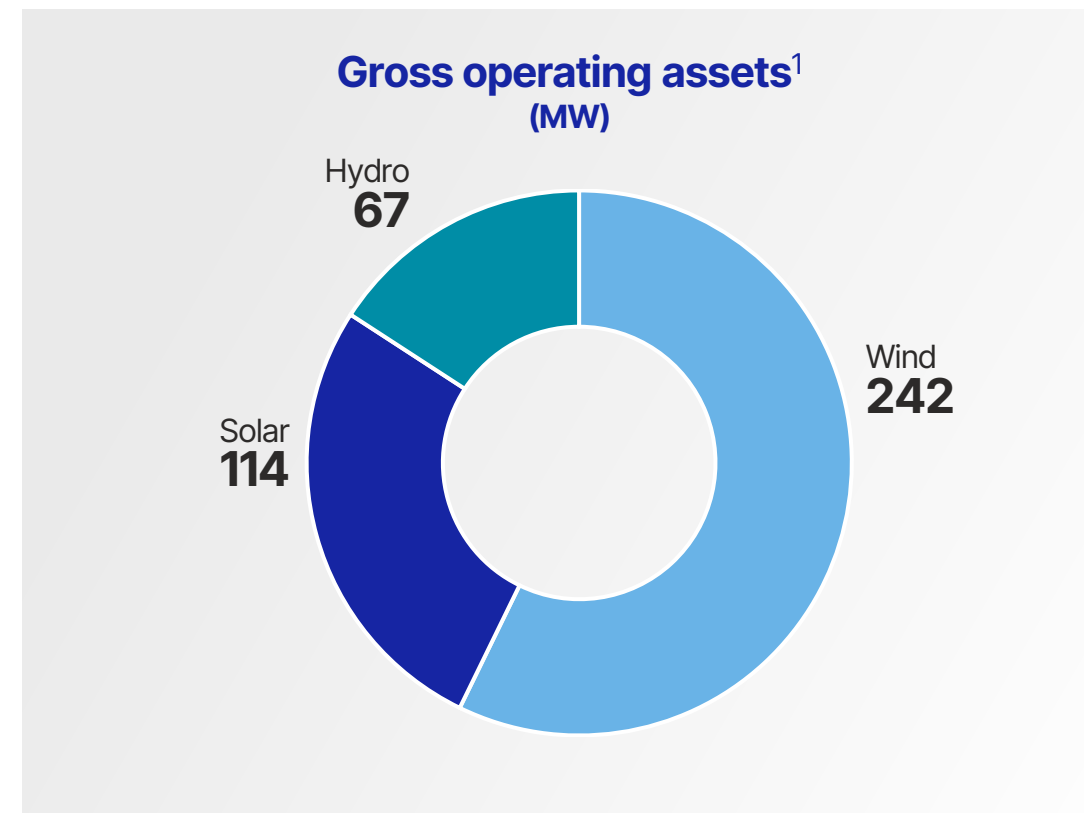
Lower risk model by contracting  
capacity into future years





# A diverse portfolio of generation operating assets with strong off-takers

Operating projects	Type	Gross Capacity	Owned Capacity	Contracted	Off-taker
Forty Mile	Wind	202	202	74%	Microsoft
Adelaide	Wind	40	30	100%	OPA
Empress	Solar	39	39	100%	Lafarge
Deerfoot	Solar	41	20	90%	Microsoft
Electricidad del Golfo	Hydro	35	35	100%	various
Oldman	Hydro	32	24	merchant	
Barlow	Solar	31	15	merchant	
El Resplandor	Solar PV	3	~3	merchant	
<b>Total</b>		<b>423</b>	<b>368</b>		



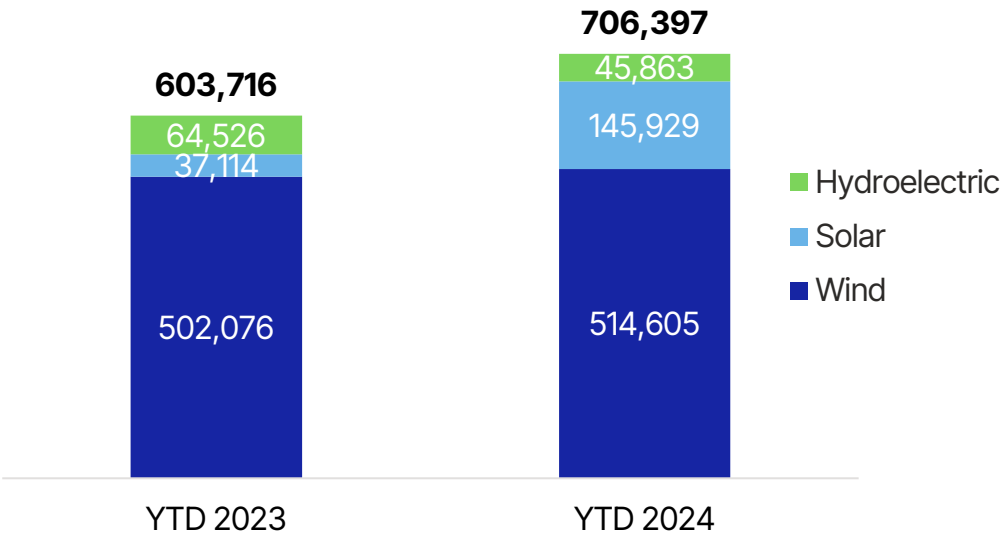
**Grew generation portfolio to 423 MW from 70 MW since 2022**

1. Includes all operating assets including those in Chile and Mexico as at September 30, 2024.

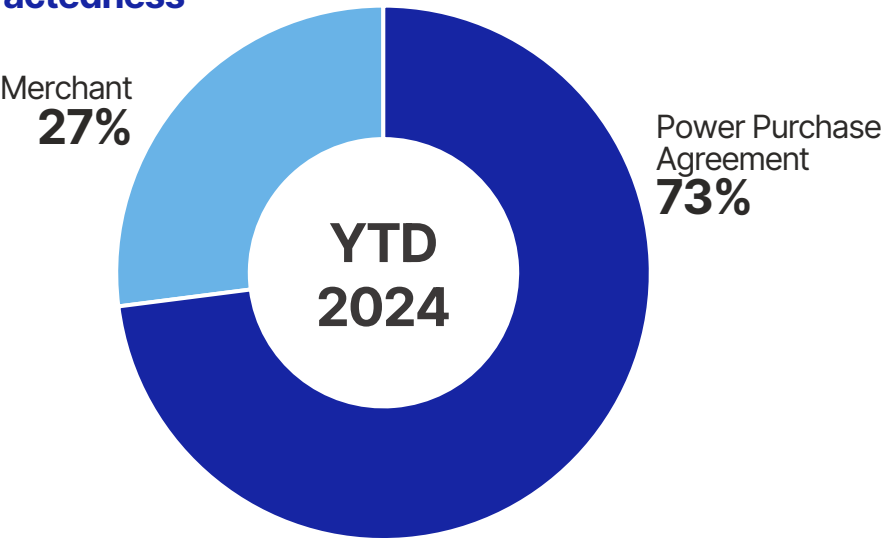


# Canadian Electricity Generation

Generation (MWh)



Contractedness



Higher generation offset lower merchant pricing



# Generation – Development Opportunities

●

 CONSTRUCTION

●

 LATE-STAGE DEVELOPMENT

⚡

 COD / OPERATING - WIND

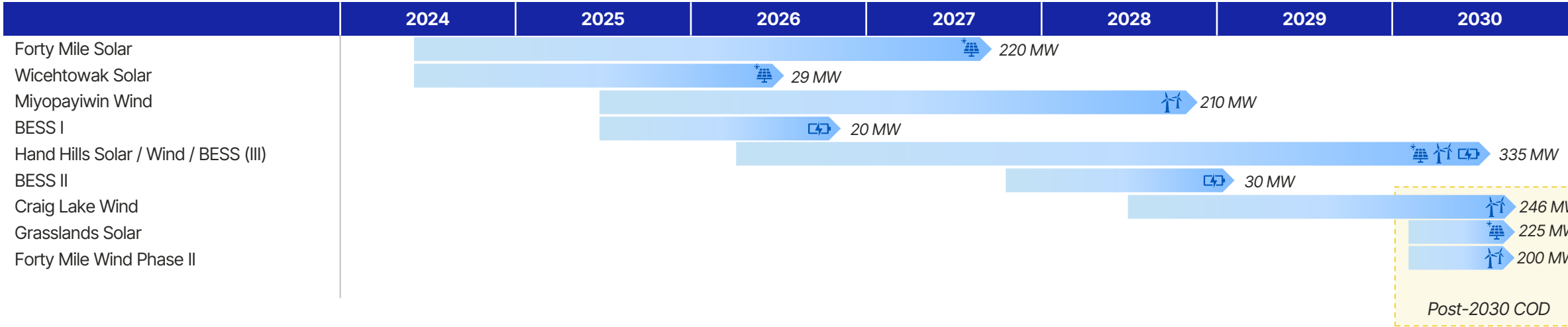
☀️

 COD / OPERATING - SOLAR

🔋

 COD / OPERATING - BESS

COD & gross installed capacities



~\$2.5bn

Gross capital deployment through 2033

~1.5GW

Gross generation capacity additions by 2033

Note: Billions of Canadian Dollars ("Bn") and Gigawatt ("GW").



# Atlas Carbon Storage Hub offers open access decarbonization for Alberta industrials

## Milestone

Final Investment Decision (FID)  
for Phase 1 achieved

## 50/50

JV with Shell  
Enabling Shell to  
produce cleaner fuels

## 7-10Mtpa

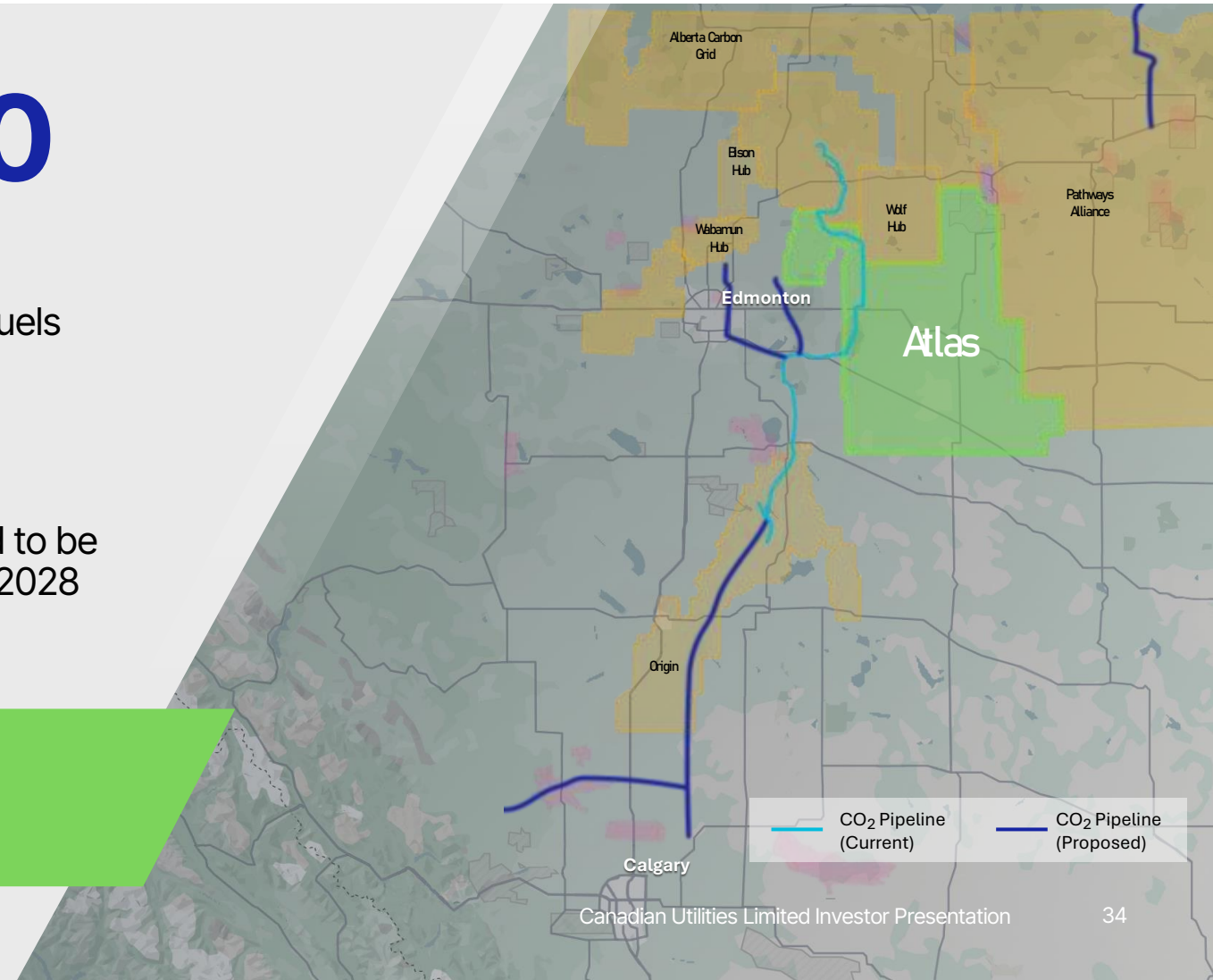
Phase 1 project  
■ 0.8 Mtpa  
Shell volumes

## COD<sup>1</sup>

Phase 1 is planned to be  
operational in Q4 2028

Expansion derisked as customer volumes  
secured

1. COD is referred to as Commercial Operation Date.



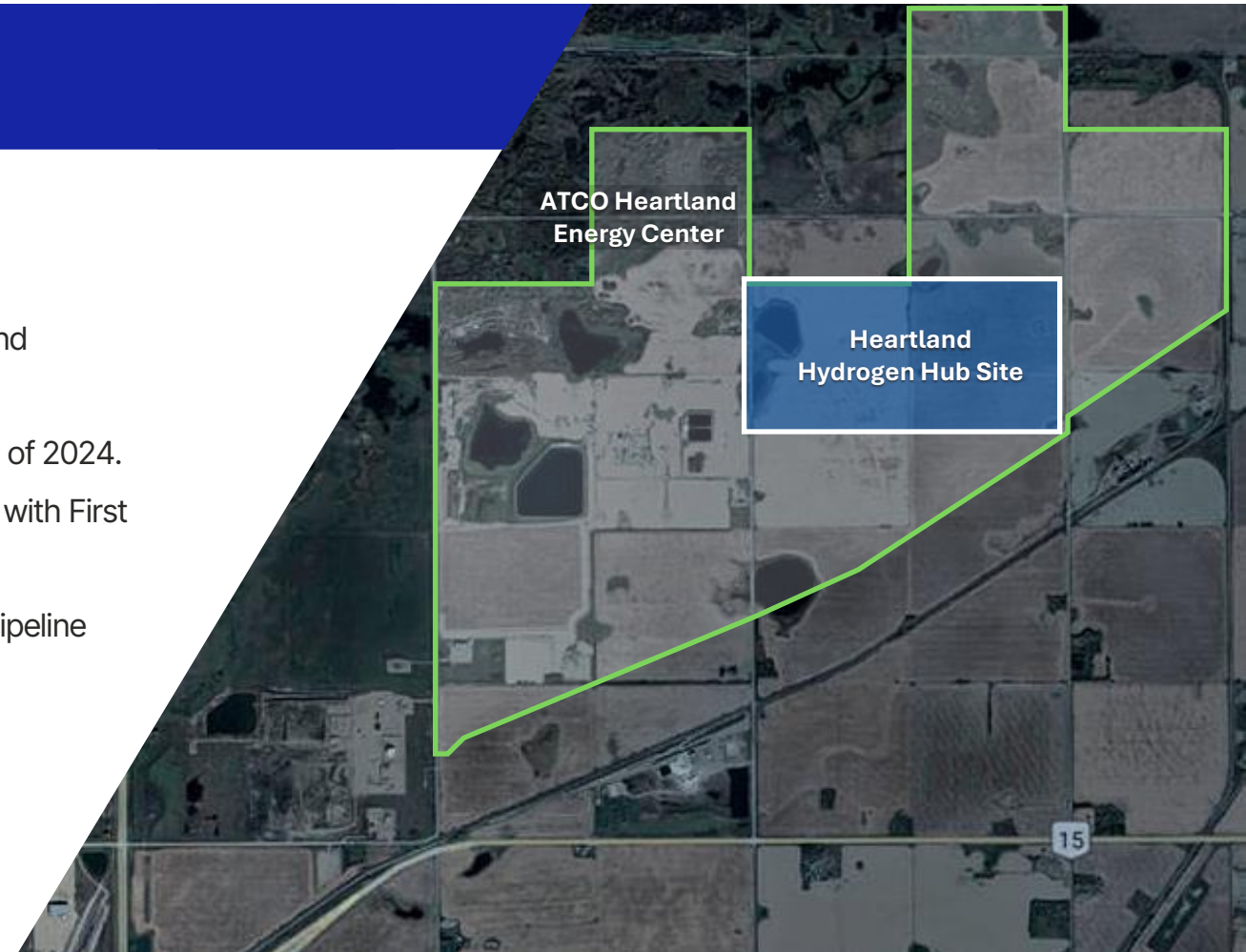


# Heartland Hydrogen Hub

## Achievements to date

### Business update

- Signed Letter of Intent with Linde Canada Inc. (Linde).
- Working alongside Linde and other parties to further the development and commercial success of the project.
- Intention to commence Front End Engineering Design (FEED) by the end of 2024.
- Progressing discussions with Federal and Provincial governments along with First Nations groups.
- Secured large available plot area (2,000 acres) proximal to customers, pipeline ROW and adjacent to both major railway corridors and highways.
- Proximity to Atlas (Shell/ATCO) Sequestration Hub.
- Internal expertise on transportation and subsurface storage.



# Partnership strategy to derisk projects



# Alberta is ideally positioned for the energy transition

## Resource

Alberta has one of the best geological formations to safely store emissions and is a strong wind and solar resource region.

## Gas Supply

Canada is the fifth largest natural gas producer in the world, with about two-thirds of production coming from Alberta.<sup>1</sup>

## Regulatory Structure

Alberta is a leader with its regulatory framework, TIER credits, pore space tenure and formation of storage hubs, together with federal ITCs.

## Macro Demand Drivers

### Energy Market

- Industrial electrification
  - Transport (EV)
  - Heating & cooling
- Data centers/AI
- Industrial onshoring

### Alberta

- #1 GDP per capita<sup>2</sup>
- 2 Bcf/d new LNG supply<sup>3</sup>
- \$42.4B in new industrial projects<sup>4</sup>

1. Government of Alberta, 2024.

2. Government of Alberta, GDP per capita, 2023.

3. Expected to come online when LNG Canada reaches full operations.

4. Government of Alberta, Major Projects, November 2024.

A woman with long brown hair, wearing safety glasses and a high-visibility yellow vest over a dark long-sleeved shirt, is focused on writing in a blue clipboard. She is standing in an industrial setting, with various pipes, valves, and machinery visible in the background. A large yellow circular component is prominent in the foreground on the right. The overall scene is brightly lit with a blue tint.

**ATCO** Australia™

# Business Highlights

- **ATCO Gas Australia** is a regulated provider of natural gas distribution services in Western Australia, serving metropolitan Perth and surrounding regions.
- **ATCO Power Australia** develops, builds, owns and operates energy and infrastructure assets, including two natural gas fired generation plants.

## Adjusted Earnings<sup>1</sup>

(\$millions)	YTD 2024	YTD 2023	Change
<b>ATCO Gas Australia<sup>2</sup></b>	<b>41</b>	54	(13)
<b>ATCO Power Australia<sup>2</sup></b>	<b>2</b>	(3)	5
<b>Total ATCO Australia<sup>1</sup></b>	<b>43</b>	51	(8)

1. Total of segments measure (as defined in NI 52-112). The most directly comparable measure reported in accordance with IFRS is earnings attributable to equity owners of the Company, which for ATCO Australia was \$22 million for the nine months ended September 30, 2024, and \$9 million for the nine months ended September 30, 2023. See *Legal Notice – Non-GAAP and Other Financial Measures Disclosure Advisory* for additional information.

2. Non-GAAP financial measure (as defined in NI 52-112). See *Legal Notice – Non-GAAP and Other Financial Measures Disclosure Advisory* for additional information.

3. Average monthly customers in 2023.



**14,700 KM**  
Pipelines  
(Owns and Operates)



**268 MW**  
Operating Assets



**803,000**  
Average monthly customers<sup>3</sup>

# Business Highlights

## Sixth Access Arrangement (AA6)

- The final decision for AA6 was received from the Economic Regulation Authority (ERA) on November 8, 2024.
- The decision set an ROE of 8.23% for the AA6 period (vs. 5.02% under the previous Access Arrangement).
- AA6 will be implemented for the period January 1, 2025 to December 31, 2029 for our Australian gas distribution utility.

## Hydrogen Jobs Plan Project

- In August 2024, the South Australian Hydrogen Jobs Plan project secured development approval for the construction and operation of 250-MW electrolyzers, a 100-tonne storage pipeline and a 200-MW hydrogen fuelled power plant.
- ATCO Australia submitted a Genuine Offer bid to the Australian Government for engineering, procurement, construction and operations, and maintenance contracts associated with the power plant component of the project.
- A decision on the bid is expected in Q4 2024.

# Growing our stable base of assets in Australia

**14,700km**

of pipeline

**800k**

customers

**\$1.4B**

2023 Mid-Year  
Rate Base<sup>1</sup>

**\$43M**

Adjusted Earnings<sup>2</sup>

**~100%**

Earnings derived from  
regulated operations  
and long-term PPAs

**10.5%**

avg. ROE  
(2011-23)



**Predictable  
and stable  
cash flow with  
a proven ability  
to outperform  
approved ROE**

1. Non-GAAP financial measure (as defined in NI 52-112). The most directly comparable measures reported in accordance with IFRS are property, plant and equipment, and intangible assets, which for ATCO Australia were \$2.8 billion and \$0.2 billion, respectively, for the year ended December 31, 2023. See *Legal Notice – Non-GAAP and Other Financial Measures Disclosure Advisory* for additional information.

2. Nine months ended September 30, 2024. Total of segments measure (as defined in NI 52-112). The most directly comparable measure reported in accordance with IFRS is earnings attributable to equity owners of the Company, which for ATCO Australia, was \$22 million for the nine months ended September 30, 2024. See *Legal Notice – Non-GAAP and Other Financial Measures Disclosure Advisory* for additional information.

# Why Invest



Regulated Utilities create a stable base of recurring cash flow and dividends and are critical to successful energy transition globally.



Non-regulated opportunities in electricity generation, clean fuels, and energy storage provide an opportunity for higher-than-utility growth and deliver diversification.



Track record of increasing dividends on common shares for 52 years.



Conservative balance sheet with well distributed and easily managed debt maturity profile.



Strong credit ratings and access to capital.

# Alberta's Macroeconomic Factors Remain Favourable



# Appendix



# Conservative balance sheet and well distributed debt profile

**\$173M**

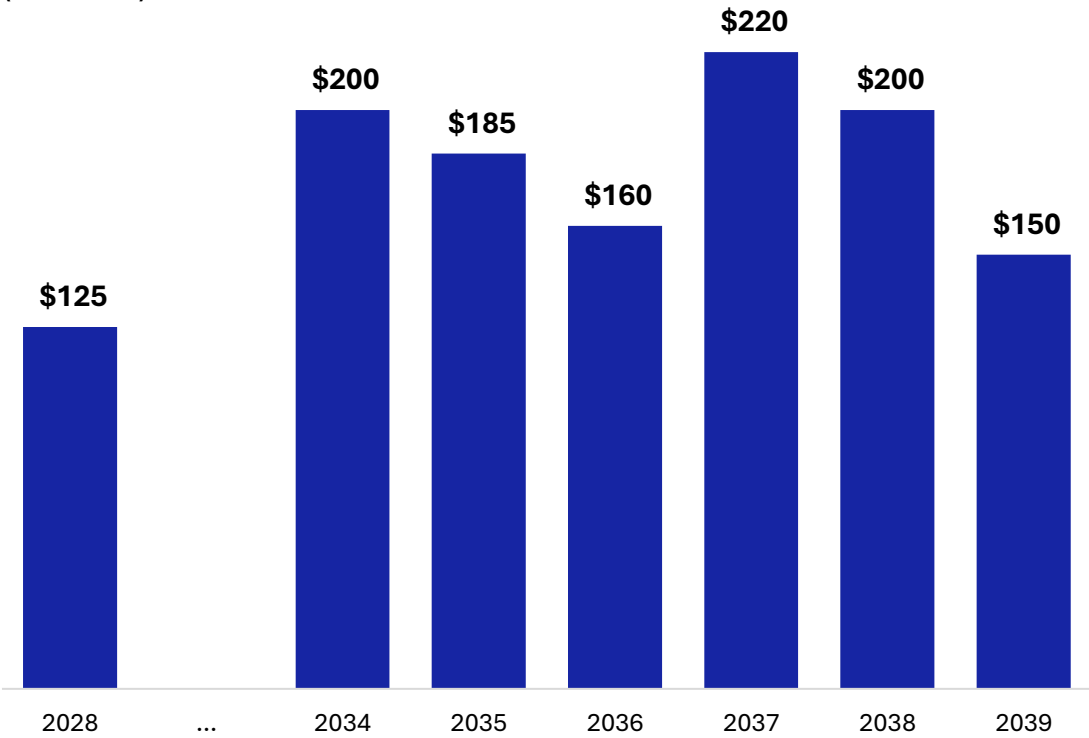
cash available

**\$2.0B**

available credit facility

	DBRS	FitchRatings
 An <b>ATCO</b> Company	A (high)	A-
 An <b>ATCO</b> Company	A	A-

CU Inc.  
(\$ millions)



Note: As at September 30, 2024.



[InvestorRelations@atco.com](mailto:InvestorRelations@atco.com)